



2016
CATALOG



TABLE OF CONTENTS

Sterilization Container Accessories	4-11
Sterilization Baskets	4
Aesculap® Baskets	5
Processing Supplies	6
Other Accessories	7-11
Instrument Racks	7
Chisel / Gouge Racks	7
ENT Alligator Forcep Rack	7
Arthroscopy Instrument Stand	7
Ultrasoft™ Silicone Basket Mats	8
Pins / Stringers	9-11
Instrument Sterilization Trays	12-16
Specialty Instrument Trays	12
Bookwalter® Trays	12
Stainless Steel with and without Lids	13-16
20 Series	13
24 Series	13
25 Series	14
26 Series	14-15
28 Series	15
29 Series	16
35 Series	16
36 Series	16
Special Utility Products	17
Mayo Trays	17
Cleaning Brushes	17
Flash Trays / Pans	17
Warranty / Repair / Return Policies	18-20
Custom Orders	21

**TO ORDER CALL:
1-800-922-0476 OR
973-779-2400**

**OR EMAIL:
CUSTOMER_SERVICE@MEDIN.COM**

**© 2016
MEDIN CORPORATION
ALL RIGHTS RESERVED.**

AESCULAP® AND GENESIS® COMPATIBLE BASKETS

Durable, 1/8" perforated, stainless steel baskets, specifically designed to fit the Aesculap® container system.

AESCULAP®

LARGE

10" W x 21.25" L, stainless

<u>Hgt.</u>	<u>Fine perf.</u>	<u>Std. perf.+</u>	<u>Large perf.*+</u>
3"	-	Y1021-3.0	-
4"		Y1021-4.0	

MEDIUM

10" W x 16" L, stainless steel

<u>Hgt.</u>	<u>Fine perf.</u>	<u>Std. perf.+</u>	<u>Large perf.*+</u>
2"	-	Y1016-2.0	-
3"	-	Y1016-3.0	-
4"	Y1016-4.0F	Y1016-4.0	-

SMALL

10" W x 9.63" L, stainless

<u>Hgt.</u>	<u>Fine perf.</u>	<u>Std. perf.+</u>	<u>Large perf.*+</u>
2"	-	Y1010-2.0	-
3"	-	Y1010-3.0	-
4"	-	Y1010-4.0	-

PROCESSING SUPPLIES

STERILIZATION FILTERS

Disposable, natural, 100% cellulose material, water repellent.

<u>Dims.</u>	<u>Qty</u>	<u>Item #</u>
*9" x 9"	1000/case	A3002
*9" x 6"	1000/case	A3004
9.5" x 9.5"	1000/case	A3001
7.63" X 7.5"	1000/case	A3005



*PULL TIGHT™ LOCKS

A plastic seal that fits through the channel on the locking pin and locks; must be broken to open container.

<u>Color</u>	<u>Qty</u>	<u>Item #</u>
White	500/case	A1034-A
White	1000/case	A1034-AB
Yellow	500/case	A1036-A



* Compatible with Aesculap® and Genesis® containers.

INSTRUMENT RACKS

CHISEL / GOUGE RACKS

Designed to protect the sharp working tips and edges of chisels and gouges from damage and personal injury. Accommodates a variety of styles.

Bruns Rack¹ (holds 12 instruments)
9" W x 8" L x 2.5" H
88-0909-B

Cobb Rack² (holds 9 instruments)
13" W x 13" L x 11.5" H
88-1311-C

Hibb Bruns Rack (holds 12 instruments)
11" W x 8" L x 2.5" H
88-0711-HB

Hoke Rack (holds 6 instruments)
7.5" W x 5.5" L x 1" H
88-0705-H

Lambotte Rack³ (holds 12 instruments)
11" W x 8" L x 2.5" H
88-0711-L

Smith Peterson Rack (holds 7 instruments)
10" W x 13" L x 1.5" H
88-1009-SP

ENT ALLIGATOR FORCEP RACK

Rack holds 10 instruments.

89-0034

ARTHROSCOPY INSTRUMENT STAND

Nylon coated rack securely holds 8 ring handled arthroscopy instruments.

21-0036



ULTRASOFT™ SILICONE BASKET MATS

The **ULTIMATE** in *soft* protection.

All mats are blue and include perforations for sterilization. compatibility.

FULL BASKET MATS

<u>Description</u>	<u>Dims.</u>	<u>Item #</u>
Large Mat	11" W x 22" L x 0.5" H	61-1122
Medium Mat	11" W x 16" L x 0.5" H	61-1116
Small Mat	11" W x 11" L x 0.5" H	61-1111
Mini Mat	6" W x 11" L x 0.5" H	61-0611

MATS FOR CUSTOM SETS

<u>Dims.</u>	<u>Item #</u>
4" W x 8" L	61-0408
5.5" W x 10" L	61-0510
6" W x 10" L	61-0610
6" W x 13" L	61-0613
8" W x 8" L	61-0808
8" W x 12" L	61-0812
8" W x 14" L	61-0814
10" W x 15" L	61-1015
10" W x 16" L	61-1016
10" W x 18" L	61-1018
11" W x 20" L	61-1120
13" W x 20" L	61-1320
16" W x 22" L	61-1622

MAT STRIPS / HOLDERS

<u>Description</u>	<u>Dims.</u>	<u>Item #</u>
Mat Strips (2 ea)	1" W x 13" L	61-0614
Mat Holders (2 ea)	13" L	61-1013



DIVIDERS / PINS / STRINGERS

Organize and Protect
your surgical instruments from damage.

INSTRUMENT HOLDING PINS

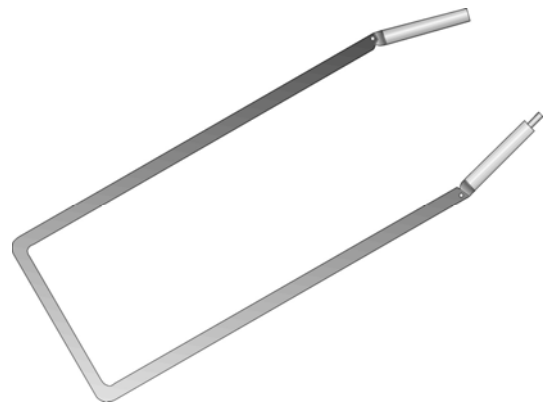
with locking nuts (0.19" diameter)

<u>Dims.</u>	<u>Item #</u>
2" H (1 ea)	70-1020
3" H (1 ea)	70-1030
3" H (10 ea)	70-1010

E-Z LOK™ INSTRUMENT STRINGERS

Double-hinge bar connects in the middle with male-female closure, bars parallel each other in length 2.5" W.

<u>Dims.</u>	<u>Item #</u>
6" L	58-0006
8" L	58-0008
10" L	58-0010
12" L	58-0012
14" L	58-0014
16" L	58-0016
18" L	58-0018



DIVIDERS / PINS / STRINGERS

“U” INSTRUMENT STRINGERS

Single “U” shaped stringer, 2..5” W.

<u>Dims.</u>	<u>Item #</u>
6” L	52-0006
8” L	52-0008
10” L	52-0010
12” L	52-0012
14” L	52-0014
16” L	52-0016
18” L	52-0018

SINGLE LINK INSTRUMENT STRINGERS

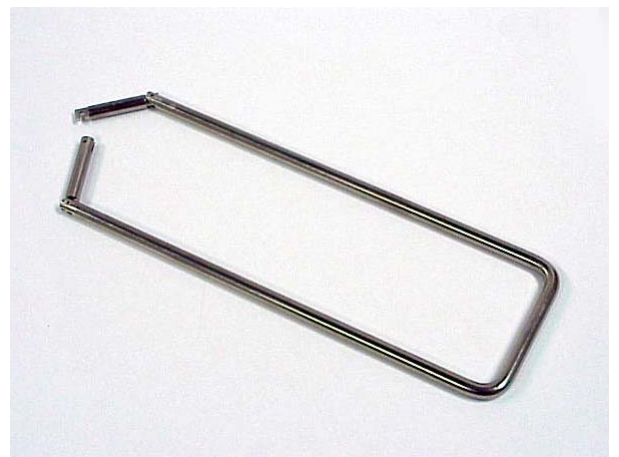
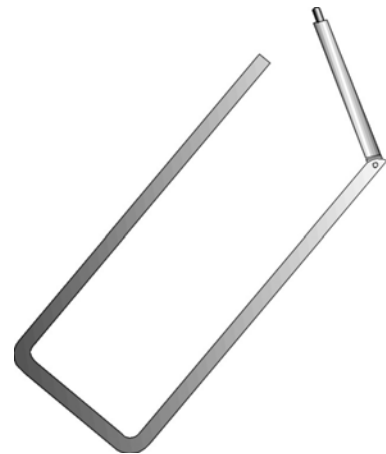
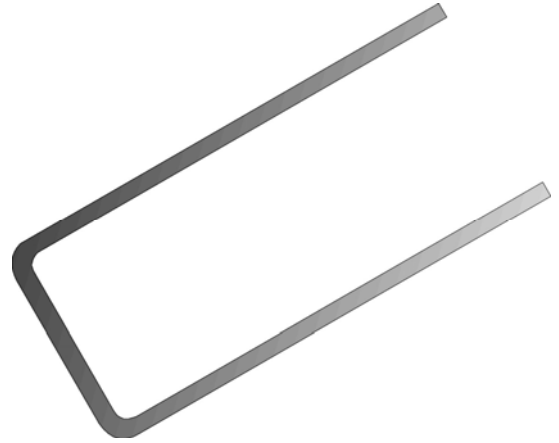
Single bar on a hinge, closes on one side with male/female closure, 2..5” W.

<u>Dims.</u>	<u>Item #</u>
6” L	51-0006
8” L	51-0008
10” L	51-0010
12” L	51-0012
14” L	51-0014
16” L	51-0016
18” L	51-0018

POSILOK™ INSTRUMENT STRINGERS

Hooks in the middle, 2..5” W.

<u>Dims.</u>	<u>Item #</u>
6” L	50-0006
8” L	50-0008
10” L	50-0010
12” L	50-0012
14” L	50-0014
16” L	50-0016
18” L	50-0018



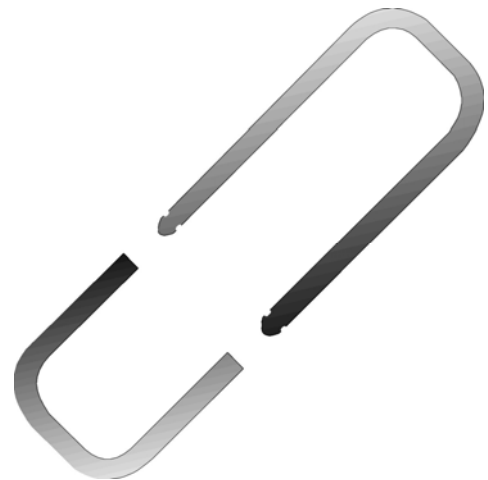
DIVIDERS / PINS / STRINGERS

Organize and Protect
your surgical instruments from damage.

WEINSTEIN INSTRUMENT STRINGERS

Two (2 ea) "U" shaped pieces of two different lengths. Smaller piece has a channel for the larger piece to fit into to close the instrument holder, 2.5" W.

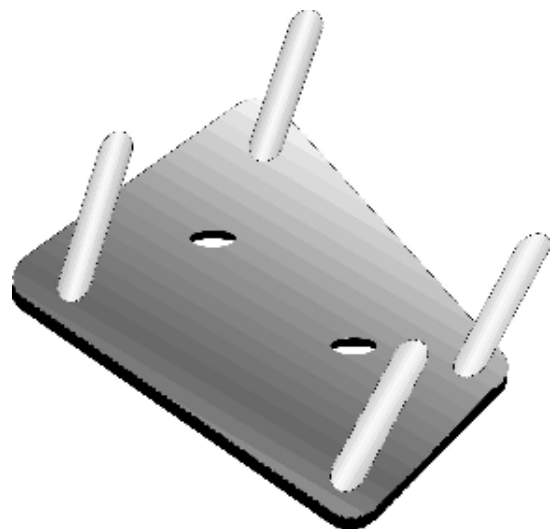
<u>Dims.</u>	<u>Item #</u>
6" L	51-0006W
8" L	51-0008W
10" L	51-0010W
12" L	51-0012W
14" L	51-0014W
16" L	51-0016W
18" L	51-0018W



POSILOK™ INSTRUMENT RACK

Holds instruments open and upright. Rack can be secured to a basket with pins or remain free. Easy to remove at time of use.

60-0010



SPECIALTY INSTRUMENT TRAYS

BOOKWALTER® TRAYS WITH LID

13" W x 22" L x 3.5" H

<u>Description</u>	<u>Item #</u>
Bookwalter™ #IIA	25-1322-BIIA
Bookwalter™ #IIB	25-1322-BIIB



Bookwalter® is owned by Symmetry Surgical.

STAINLESS STEEL TRAYS (W/ OR W/O LIDS)

20 SERIES

Stainless steel trays without lid and with 0.125" perforations in the bottom.

Outside Handles:

<u>Dimensions</u>	<u>Item #</u>
5" W x 15.5" L x 3/5" H	20-0515
5" W x 20" L x 3.5" H	20-0520
6" W x 24" L x 3.5" H	20-0624
6" W x 30" L x 3.5" H	20-0630
8" W x 25.25" L x 3.5" H	20-0825
9" W x 26" L x 3.5" H	20-0926
10" W x 6.5" L x 2.5" H	20-1006
10.5" W x 10" L x 3.5" H	20-1010
10.5" W x 15" L x 3.5" H	20-1015
10.5" W x 20" L x 3.5" H	20-1020
13" W x 20.25" L x 3.5" H	20-1321
15" W x 25" L x 3.5" H	20-1525

Inside Handles:

<u>Dimensions</u>	<u>Item #</u>
10.5" W x 20" L x 3.5" H	20-1020C
13" W x 20.25" L x 3.5" H	20-1320



24 SERIES

Osteotome tray with rows of separating pins and silicone strips on the bottom, alternating rows of silicone hold-down bars on the top, locking latch, and outside handles.

Trays:

<u>Dimensions</u>	<u>Item #</u>
8" W x 8.5" L x 1.25" H	24-0808
8" W x 12.5" L x 1.25" H	24-0812
6" W x 10.5" L x 1.25" H	24-1006
10.5" W x 10" L x 1.25" H	24-1010
10.5" W x 15" L x 1.25" H	24-1015

Silicone Kits:

<u>Associated Tray</u>	<u>Item #</u>
24-0808	24-0808-001
24-0812	24-0812-001
24-1006	24-1006-001
24-1010	24-1010-001
24-1015	24-1015-001



STAINLESS STEEL TRAYS (W/ OR W/O LIDS)

25 SERIES

Stainless steel trays with lid and with 0.125" perforations in the top and bottom, and with positive locking latch. Removable lid stores under tray during use.

<u>Dimensions</u>	<u>Item #</u>
3.5" W x 7" L x 1.75" H	25-0307
3.5" W x 13" L x 2.5" H	25-0313
5" W x 15.5" L x 3.5" H	25-0515
5" W x 20" L x 3.5" H	25-0520
6" W x 20" L x 3" H	25-0620
6" W x 24" L x 3.5" H	25-0624
6" W x 30" L x 3.5" H	25-0630
7" W x 32" L x 7" H	25-0732
8" W x 25.25" L x 3.5" H	25-0825
6.5" W x 10" L x 2.5" H	25-1006
10.5" W x 10" L x 3.5" H	25-1010
10.5" W x 15" L x 3.5" H	25-1015
10.5" W x 20" L x 3.5" H	25-1020
13" W x 20.25" L x 3.5" H	25-1321
13" W x 24" L x 3.5" H	25-1324
15" W x 25" L x 3.5" H	25-1525

XXXXXXXXXXXXXXXXXXXX
XXXXXXXXXXXXXXXXXXXX
XXXXXXXXXXXXXXXXXXXX
XXXXXXXXXXXXXXXXXXXX
XXXXXXXXXXXXXXXXXXXX
XXXXXXXXXXXXXXXXXXXX
XXXXXXXXXXXXXXXXXXXX
XXXXXXXXXXXXXXXXXXXX
XXXXXXXXXXXXXXXXXXXX
XXXXXXXXXXXXXXXXXXXX
XXXXXXXXXXXXXXXXXXXX
XXXXXXXXXXXXXXXXXXXX
XXXXXXXXXXXXXXXXXXXX
XXXXXXXXXXXXXXXXXXXX
XXXXXXXXXXXXXXXXXXXX

26 SERIES

Micro tray with **Ultrasoft™** silicone mat strips. Micro tray with silicone cushion on the top and spiked silicone strips on the bottom, holds instruments gently, yet snugly in place.

Trays:

<u>Dimensions</u>	<u>Item #</u>
8.5" W x 9" L x 1.13" H	26-0809
8.5" W x 12.5" L x 1.13" H	26-0812
10.5" W x 6" L x 1.13" H	26-1006
10.5" W x 10" L x 1.13" H	26-1010
10.5" W x 15" L x 1.13" H	26-1015
10.5" W x 20" L x 1.13" H	26-1020

Silicone Kits for Tray Tops:

<u>Associated Tray</u>	<u>Item #</u>
26-0809	26-0809-001
26-1015	26-1015-001



STAINLESS STEEL TRAYS (W/ OR W/O LIDS)

26 SERIES (CONTINUED)

**Micro tray with *Ultrasoft*[™]
full silicone mat in base.**

<u>Dimensions</u>	<u>Item #</u>
8.5" W x 9" L x 1.13" H	26-0809-FM
8.5" W x 12.5" L x 1.13" H	26-0812-FM
10.5" W x 6" L x 1.13" H	26-1006-FM
10.5" W x 10" L x 1.13" H	26-1010-FM
10.5" W x 15" L x 1.13" H	26-1015-FM
10.5" W x 20" L x 1.13" H	26-1020-FM

**Double-deck Micro tray with *Ultrasoft*[™]
silicone mat strips in base.**

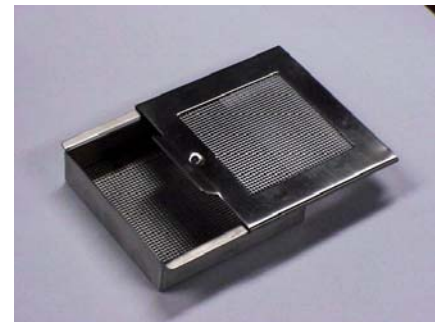
<u>Dimensions</u>	<u>Item #</u>
8.5" W x 9" L x 2" H	26-0809-DBL
8.5" W x 12.5" L x 2" H	26-0812-DBL
10.5" W x 6" L x 2" H	26-1006-DBL
10.5" W x 10" L x 2" H	26-1010-DBL
10.5" W x 15" L x 2" H	26-1015-DBL
10.5" W x 20" L x 2" H	26-1020-DBL

28 SERIES

Burr Case

Extremely fine (1mm) perforated stainless steel tray.

<u>Dimensions</u>	<u>Item #</u>
3" W x 3" L x 0.63" H	28-0303SP
3" W x 4" L x 0.63" H	28-0304SP



TLC[™] Micro Trays

With movable silicone cradles to protect instruments.

<u>Dimensions</u>	<u>Item #</u>
5" W x 7.5" L x 0.88" H	28-0508
8" W x 8.5" L x 0.88" H	28-0808
8" W x 12.5" L x 0.88" H	28-0812
10.5" W x 15" L x 0.88" H	28-1015

Silicone Kits for Trays:

<u>Associated Tray</u>	<u>Item #</u>
28-1015 (top strips)	28-1015-001
28-1015 (bottom strips)	28-1015-002



STAINLESS STEEL TRAYS (W/ OR W/O LIDS)

29 SERIES

Sensitouch™ Micro Tray Series

Holds gently, yet snugly—**protection!**

Single Deck:

<u>Dimensions</u>	<u>Item #</u>
8" W x 8.5" L x 1.13" H	29-0809
8.5" W x 12.5" L x 1.13" H	29-0812
10" W x 10.5" L x 1.13" H	29-1010
10.5" W x 15" L x 1.13" H	29-1015

Replacement Strips:

<u>Associated Tray</u>	<u>Item #</u>
29-1015 (top strip)	29-1015-001
29-1015 (bottom strip)	29-1015-002

Double Deck:

<u>Dimensions</u>	<u>Item #</u>
10.5" W x 15" L x 2" H	29-1015-DBL



35 SERIES

Hard anodized aluminum case. Lightweight, yet durable. Lidded, complete with an Ultrasoft™ silicone spike mat.

Perfect for a small set of instruments!

<u>Dimensions</u>	<u>Item #</u>
4" W x 8" L x 0.66" H	35-0408
6" W x 10" L x 1" H	35-1006
8" W x 12" L x 1" H	35-0812
8" W x 14" L x 1" H	35-0814



36 SERIES

All sides are perforated in this mini tray with lid. Ideal for protecting delicate instruments during decontamination and sterile processing. Open sides allow for excellent cleaning in sonic washers and washer/sterilizer.

Outer wrap or sterilization container required for sterilization of any tray.

<u>Dimensions</u>	<u>Item #</u>
6.5" W x 10" L x 2" H	36-1006

SPECIAL UTILITY PRODUCTS

MAYO TRAYS

<u>Low Side:</u>	<u>Perf</u>	<u>Non-Perf</u>
<u>Dimensions</u>	<u>Item #</u>	<u>Item #</u>
10" W x 6.5" L x 0.75" H	30-1065	30-1065NP
13.5" W x 9.75" L x 0.75" H	30-1309	30-1309NP
15" W x 10.63" L x 0.75" H	30-1510	30-1510NP
17" W x 11.63" L x 0.75" H	30-1711	30-1711NP
19" W x 12.63" L x 0.75" H	30-1912	30-1912NP

<u>High Side:</u>	<u>Item #</u>	<u>Item #</u>
<u>Dimensions</u>	<u>Item #</u>	<u>Item #</u>
9" W x 5" L x 2" H	40-0952	40-0952NP
10" W x 6.5" L x 2" H	40-1062	40-1062NP
12.75" W x 10.5" L x 2.5" H	40-1210	40-1210NP
12.25" W x 7.75" L x 2.5" H	40-1272	40-1272NP
16" W x 10" L x 2.5" H	40-1610	40-1610NP



FLASH TRAYS

1/8" perforations in bottom, solid sides, safety handle hook on both ends for easy removal from the autoclave when hot (with or without removable lid).

<u>Dimensions</u>	<u>With lid</u> <u>Item #</u>	<u>W/O lid</u> <u>Item #</u>
5" W x 7" L x 2.5" H	22-0507-LD	22-0507
10" W x 6.5" L x 2.5" H	22-1006-LD	22-1006
10" W x 10.5" L x 3.5" H	22-1011-LD	22-1011



FLASH PANS

Pan with drainage perforations on bottom, solid sides, safety hook on both ends for easy removal from the autoclave when hot (sold without lids).

<u>Dimensions</u>	<u>Item #</u>
5" W x 7" L x 2" H	42-0952
6.5" W x 10" L x 2" H	42-1062

CLEANING BRUSHES

<u>Description</u>	<u>Item #</u>
0.125" diameter, 12" L (1 pair)	61-0012

WARRANTY AND POLICIES

Warranty:

Medin guarantees its catalog products to be free of defects in materials and workmanship. Merchandise returned due to defects in materials or workmanship will at our option be repaired or replaced at no charge to the customer. Exclusions include adulteration, misuse or abuse of the product, normal wear and tear of the product, and product containing nylon coating that has been flash sterilized.

Ordering:

All orders can be communicated via telephone between the hours of 8:30AM and 4:30PM Monday through Friday Eastern Time, except for holidays. Fax orders and email orders are also accepted. Medin Corporation is not responsible for duplicate orders resulting from confirmations sent that do not clearly state in some way: "Confirmation of order—do not duplicate". If a confirmation of your order is sent to us, it must state clearly on the order that it is a confirming copy.

Phone number: (973) 779-2400
Fax number: (973) 779-2463
Email: traysrus@medin.com

Minimum order is \$50.00 (excluding shipping charges), per order, except for repair orders.. Returns must have prior authorization and are subject to a restocking charge in addition to freight charges. Medin Corporation assumes no responsibility for product ordered in error.

Product specifications are subject to change without notice. Medin Corporation is not responsible for typographical errors.

Sample Policy:

Samples for evaluation may be provided upon request. Full credit will be granted for unused sample product returned within 30 days and which follow the returned goods and allowance policy stated below.

Freight to and from Medin Corporation is the responsibility of the customer.

Shipment and Receipt of Goods:

Shipment of product is ground using common carriers. If a specific shipment method is desired, inform customer service at the time of ordering. All shipments are FOB NJ.

Claims for loss or damage during shipment should be filed immediately with the transportation carrier. We suggest that the damaged product and all packaging material should be kept for inspection by the carrier.

All claims for short shipments or damaged goods must be communicated to Medin Corporation Customer Service, in writing, within 10 days after receipt of goods. Claims after 10 days will not be honored.

Prices:

Contact Customer Service for pricing or for requests for formal quotation.

WARRANTY AND POLICIES

Terms:

Net 30 days. All orders are FOB NJ. New customer orders will ship COD or per credit card in advance for the first shipment unless other arrangements have been made through our credit department.

Returned Good and Allowance Policy:

All returns are subject to these terms.

Authorization for the return of Medin product must be obtained from Customer Service. An RMA (Return Merchandise Authorization) number will be assigned. Any merchandise returned without authorization may be returned to the sender, freight collect, by Medin Corporation and the customer will not receive any credit.

The RMA number must accompany the returned item(s) and be clearly marked on the outside of the shipping carton and on enclosed paperwork. Forward the shipment to 90 Dayton Avenue, Bldg 7D, Passaic, NJ, prepaid, with paperwork attached to the carton. Collect shipments will not be accepted.

Used product must be cleaned, disinfected and sterilized prior to return, and paperwork certifying this has been completed must accompany the return. Returns that are suspect will be returned to the sender, freight collect, by Medin Corporation and the customer will not receive any credit.

Any requested for returned goods authorization must include:

- Reason for return. Medin Corporation reserves the right to determine if goods will be accepted for credit as outlined in our stock return policy.
- Catalog number, size and quantity.
- Distribution/dealer's purchase order number, or hospital purchase order number, or Medin Corporation's invoice number.

Merchandise that will not be accepted for credit:

- Custom product.
- Products not listed in the current price list, or discontinued product.
- Merchandise damaged by common carrier.
- Any product that has aged more than 60 days from date of invoice.
- Used product, unless it falls under the warranty and has been preauthorized for return.
- Product damaged as the result of customer abuse or improper use of product (e.g. damage from use of improper cleaning or disinfecting chemicals).
- Flash sterilization voids the warranty on nylon-coated trays.
- Product that has been tampered with, changed or revised in any way.

Allowance schedule for acceptable stock returns:

- A \$25.00 minimum restocking charge, per order, applies to all returned product, including purchase orders canceled after shipment of order.
- Saleable product returned within 45 days from date of invoice—15% restocking charge.
- Saleable product returned after 15 days from date of invoice and within 60 days from date of invoice—40% restocking charge.
- No product accepted for return after 60 days from date of invoice.
- Product defective at time of receipt, other than through common carrier damage, will receive full exchange at no charge.
- Product processed in error by Medin Corporation.

WARRANTY AND POLICIES

Notes

- Medin Corporation reserves the sole discretion to determine repair or replacement of defective items.
- Repairs not covered under warranty will be billed to the customer. The customer will be contacted to approve repair or replacement costs. Time may be saved by pre-authorizing repairs up to a specified limit.
- Dealer or hospital must prepay all freight charges on returns except for defective material or merchandise shipped in error.
- Unsaleable merchandise shipped to Medin Corporation will be destroyed and no credit will be issued.
- This policy constitutes the entire policy for Medin Corporation. It supersedes all prior returned goods policies, whether written or oral, with respect thereto and may not be modified orally.

TRADEMARK INFORMATION

Ultrasoft, Posilok, Sensitouch and Pull-Tight are trademarks of Medin Corporation.

Other™ and ® are trademarks of their respective holders.

CUSTOM CATALOG ORDERS

Do you have a need for a custom size or a modification of an existing catalog item?

Call with your specifications.

